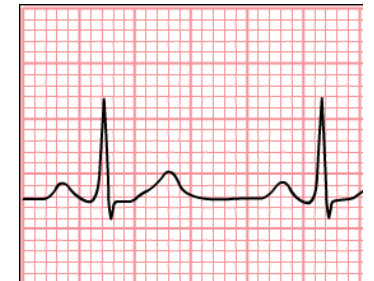
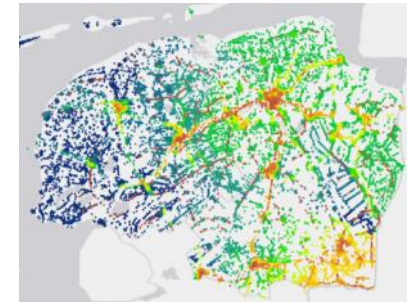


# Data capture and processing



# Data release



## Welcome at the LifeLines Data Catalogue!

The LifeLines Data Catalogue provides an overview of all the data collected in LifeLines.

When you click 'catalogue' you can browse all available data items from questionnaires, measurements and (blood and urine) sample analysis. Also, you can make a selection of data items that you will need for your research, and download the list.



### Browse variables



- Cohort
  - Adult 18 - 65 years
    - Baseline
      - Interview
      - Laboratory assessment
      - Measurement
        - Age reader
        - Antropometry
        - Blood pressure
        - Electrocardiography
        - Lung function
        - MMSE
        - Proxy
        - RFFT
      - Questionnaire
        - Activities
        - Birth
        - Demographics
          - Family
          - Household composition
          - Living situation
          - Marital status

### Variable description

<b>Name:</b>	Highest completed education
<b>Description (en):</b>	What is your highest completed education?
<b>Description (nl):</b>	Wat is uw hoogst voltooide opleiding?
<b>Data type:</b>	categorical

Code	Label	Description
8	University	University
5	Intermediate vocational education or apprenticeship	Intermediate vocational education or apprenticeship
7	Higher vocational education	Higher vocational education
2	Primary education	Primary education
1	No education	No education
3	Lower or preparatory vocational education	Lower or preparatory vocational education
4	Lower general secondary education	Lower general secondary education
6	Higher general secondary education or pre-university secondary education	Higher general secondary education or pre-university secondary education
9	Other education	Other education

### Variable selection

Group	Variable	Description	Remove
Antropometry	Length	Length in cm	<input checked="" type="checkbox"/>
Antropometry	Weight	Weight in kg	<input checked="" type="checkbox"/>
Test result	FEV1	FEV1 (highest value)	<input checked="" type="checkbox"/>
MMSE	MMSE score	MMSE score	<input checked="" type="checkbox"/>
Marital status	Divorce	Did you ever divorce?	<input checked="" type="checkbox"/>
Marital status	Duration current relationship	What is the duration of your current relationship? (in years)	<input checked="" type="checkbox"/>
Marital status	Marital status	What is your marital status?	<input checked="" type="checkbox"/>

- Anonymization
- Data aggregation
- Transportation to separate database

- Tailor made dataset
- Remote access through workspace
- Dataset are archived

